



WHERE THE LIVING IS EASY.



MODULAR HOMES

2025





## STANDARD FEATURES MODULAR HOMES

### INTERIOR

SHAW 25 OZ CARPET WITH 5# REBOND PAD TACK STRIP  
9' FLAT CEILING FINISH THROUGHOUT  
STIPPLE CEILING FINISH  
FINISHED CEILING JOINTS  
1/2" DRYWALL THROUGHOUT  
BUILDER GRADE PRIMER THROUGHOUT  
"CLOSET MAID" VENTILATED WIRE SHELVING IN CLOSETS  
LED RECESSED CAN LIGHTS THROUGHOUT  
MDF 3" DOOR, 2 1/4" WINDOW CASING AND 5" BASE TRIM  
2-PANEL WHITE INTERIOR DOORS  
TRANSOMS OVER DOORSIDE WINDOWS  
TRAY CEILING - PRIMARY BEDROOM  
DRAPES - LIVING ROOM

### KITCHEN

KITCHEN CABINETS TO CEILING - VBP  
HARDWOOD CABINET STILES  
HARDWOOD CABINET DOORS  
CONCEALED EUROPEAN STYLE COUNTER-SUNK HINGES  
3/4" ADJUSTABLE SHELVES IN OVERHEAD CABINETS  
27" X 10" STAINLESS STEEL KITCHEN SINK  
W/BLACK GOOSENECK FAUCET  
SAMSUNG APPLIANCES  
30" DLX ELECTRIC RANGE - STAINLESS STEEL  
26 CU FT SIDE BY SIDE REFRIGERATOR  
W/ICEMAKER - STAINLESS STEEL  
DISHWASHER - STAINLESS STEEL  
UPGRADED RANGE HOOD  
RECESSED LED CAN LIGHTS IN KITCHEN  
BANK OF DRAWERS  
DRAWER OVER DOOR CONSTRUCTION  
CAN LIGHT IN DINING ROOM - VBP  
PENDENTS OVER ISLAND  
SOFT CLOSE KITCHEN DRAWERS & DOORS  
BLACK PANTRY DOOR

### INSULATION

ZONE III INSULATION PACKAGE  
- R-49 BLOWN CEILING INSULATION  
W/VAPOR BARRIER  
- R-21 FIBERGLASS INSULATION IN WALLS  
- FIBERGLASS HEAT DUCTS W/IN-FLOOR CROSSOVER

### BATHS

60" CERAMIC SHOWER & FREE STANDING TUB  
IN PRIMARY BATH  
60" 1PC FIBERGLASS TUB/SHOWER - BATH 2  
BANK OF DRAWERS IN PRIMARY BATH & BATH 2  
HIGH PRESSURE LAMINATED COUNTERTOPS & BACKSPLASH  
W/MICROBAN ANTIMICROBIAL TECHNOLOGY  
PORCELAIN COMMODOES  
SQUARE PORCELAIN LAVS  
POWER EXHAUST FANS  
LIGHTED VANITY MIRRORS - PRIMARY BATH  
OVER MIRROR VANITY LIGHTS - BATH 2  
36" TALL VANITIES IN BOTH BATHS  
PFISTER METAL FAUCETS - BLACK

### EXTERIOR

5/12 ROOF PITCH  
GAF ARCHITECTURAL FIBERGLASS SHINGLES  
METAL FACIA  
VINYL VENTED SOFFIT  
36" CRAFTSMAN 3-LIGHT FRONT DOOR  
W/DEADBOLT & THUMB LATCH HANDLE  
36" PRAIRIE REAR DOOR W/DEADBOLT  
EXTERIOR LIGHT AT FRONT & REAR DOOR  
4 1/2" DUTCH LAP VINYL SIDING  
(2) EXTERIOR GFI RECEPTACLE & FAUCETS  
LOW E VINYL WINDOWS W/3 OVER CLEAR GRIDS  
VINYL WINDOW SURROUNDS (DOORSIDE)  
RECESSED ENTRY  
VINYL ARGON GAS WINDOWS

### UTILITIES

200 AMP SERVICE PANEL  
ELECTRIC CARRIER FURNACE  
ECOBEE 5 WIFI THERMOSTAT  
40 GALLON HYBRID HEAT PUMP WATER HEATER  
WATER HEATER PAN WITH EXTERIOR DRAIN  
PEX PLUMBING  
WIRE & PLUMB FOR WASHER  
WIRE & VENT FOR DRYER  
RECESSED WHOLE HOUSE SHUT OFF  
WATER SHUT OFFS THROUGHOUT  
GFCI PROTECTED RECEPTACLES IN KITCHEN AND BATHS  
FURNACE & WATER HEATER CLOSE-OFF DR  
SMOKE DETECTOR  
3 WAY SWITCH - HALL

### CONSTRUCTION

2" X 10" FLOOR JOISTS - 16" O.C.  
23/32" T&G OSB FLOOR DECKING GLUED & FASTENED  
2" X 6" EXTERIOR WALLS - 16" O.C.  
30LB. ROOF LOAD  
RIDGE VENT ROOF VENTING  
LINKED SMOKE DETECTORS  
W/BATTERY BACK-UP IN MAIN LIVING & ALL BEDROOMS  
7/16" OSB EXTERIOR SHEATHING W/WINDWRAP  
KWIKSET INTERIOR & EXTERIOR DOOR KNOBS  
W/MICROBAN ANTIMICROBIAL TECHNOLOGY  
WHOLE HOUSE VENTILATION FAN

### MODULAR SPECIFICATIONS

2" X 10" FLOOR JOISTS 16" O.C.  
R-21 WALL INSULATION  
R-49 ROOF INSULATION  
2" X 4" INTERIOR WALLS  
2" X 4" MATE LINE WALL  
40/40 200 AMP SERVICE PANEL  
METAL CROSS BRIDGING  
SMOKE/CARBON MONOXIDE DETECTOR  
WISCONSIN HAS NO PLUMBING





## TABLE OF CONTENTS

NAME	MODEL	SIZE	SQ. FT.	BEDROOMS	BATHS	PAGE
Utopia	5230-MS050	52x30	1560	3	2	4
Good Life	5630-MS051	56x30	1680	3	2	5
The Dream	6030-MS052	60x30	1800	3	2	6
Paradise	6430-MS053	64x30	1920	3	2	7
Highland	6430-MS060	64x30	1920	3	2.5	8
View	6630-MS055	66x30	1821	3	2	9



MODEL NUMBER:

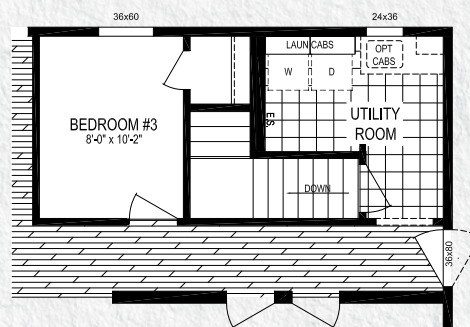
# 5230-MS050

52 x 30 | 1560 Sq. Ft. 3 Bed | 2 Bath

## UTOPIA



BASEMENT STAIR OPT.  
(OMITS STD. FURNACE & WH)



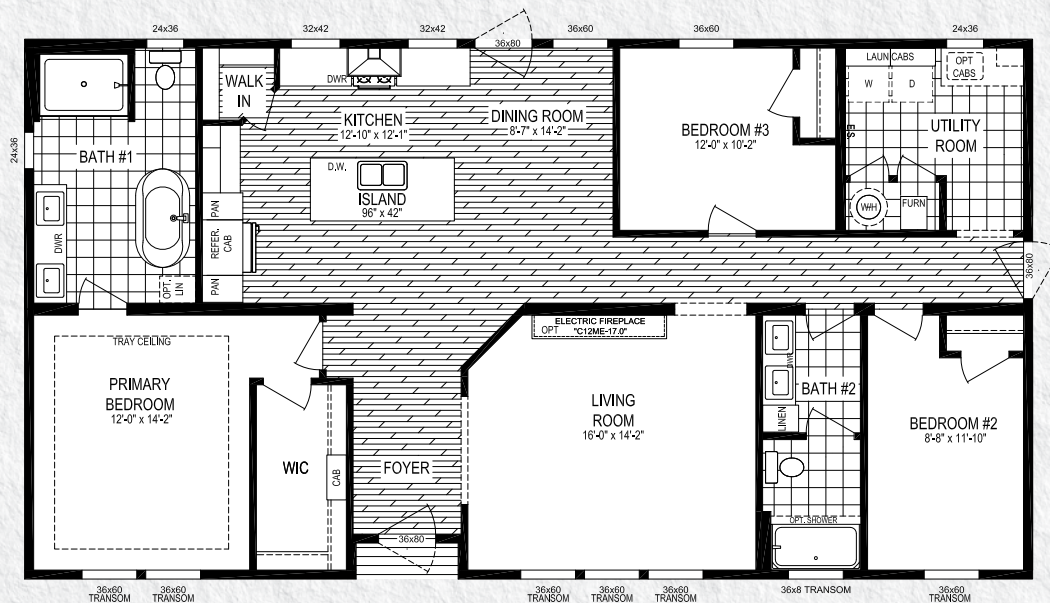


MODEL NUMBER:

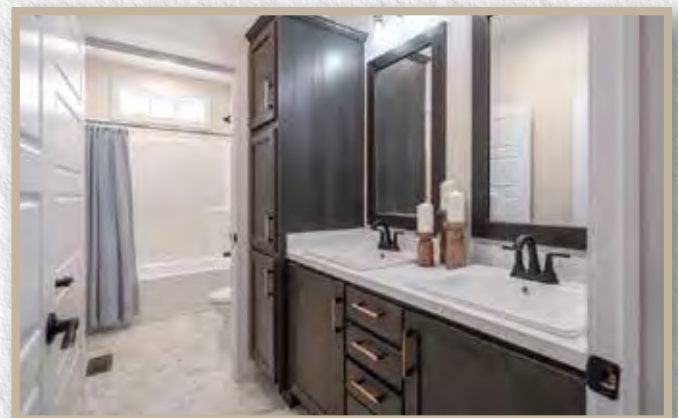
# 5630-MS051

56 x 30 | 1680 Sq. Ft. 3 Bed | 2 Bath

## GOOD LIFE



( BASEMENT STAIR OPT.  
OMITS STD. FURNACE & WH)





MODEL NUMBER:

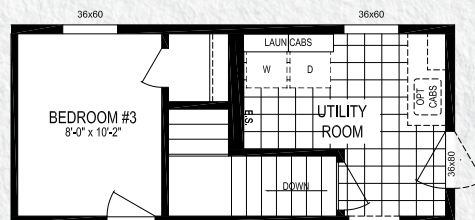
# 6030-MS052

60 x 30 | 1800 Sq. Ft. 3 Bed | 2 Bath

## THE DREAM



BASEMENT STAIR OPT.  
(OMITS STD. FURNACE & WH)



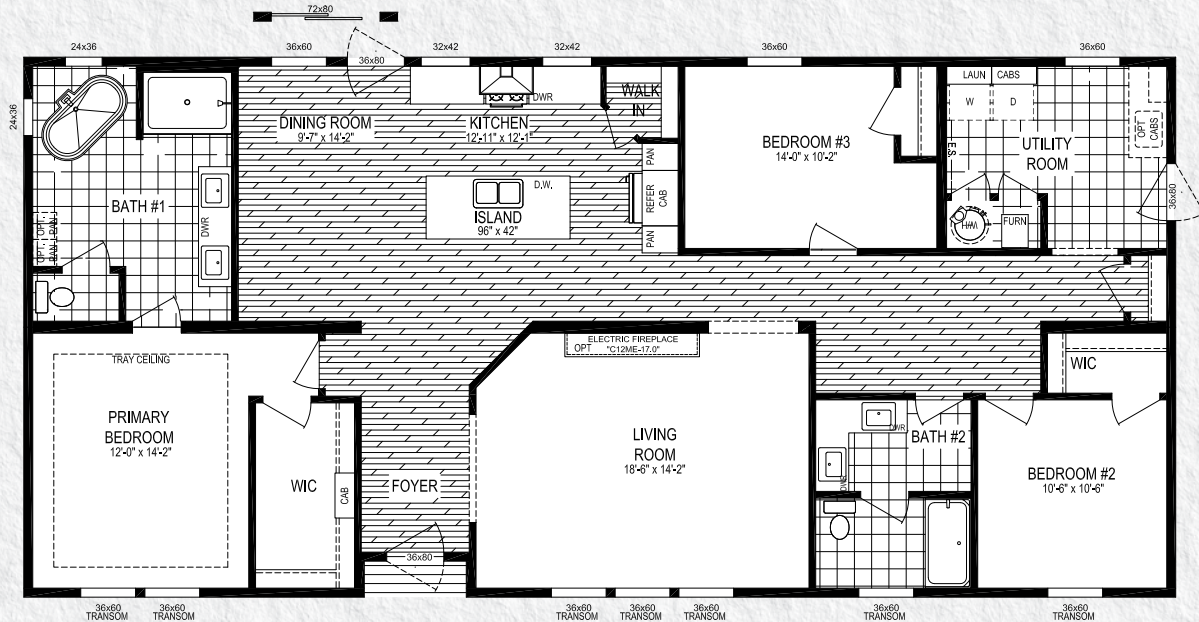


MODEL NUMBER:

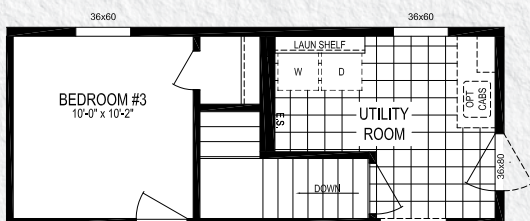
# 6430-MS053

64 x 30 | 1920 Sq. Ft. 3 Bed | 2 Bath

## PARADISE



BASEMENT STAIR OPT.  
(OMITS STD. FURNACE & WH)



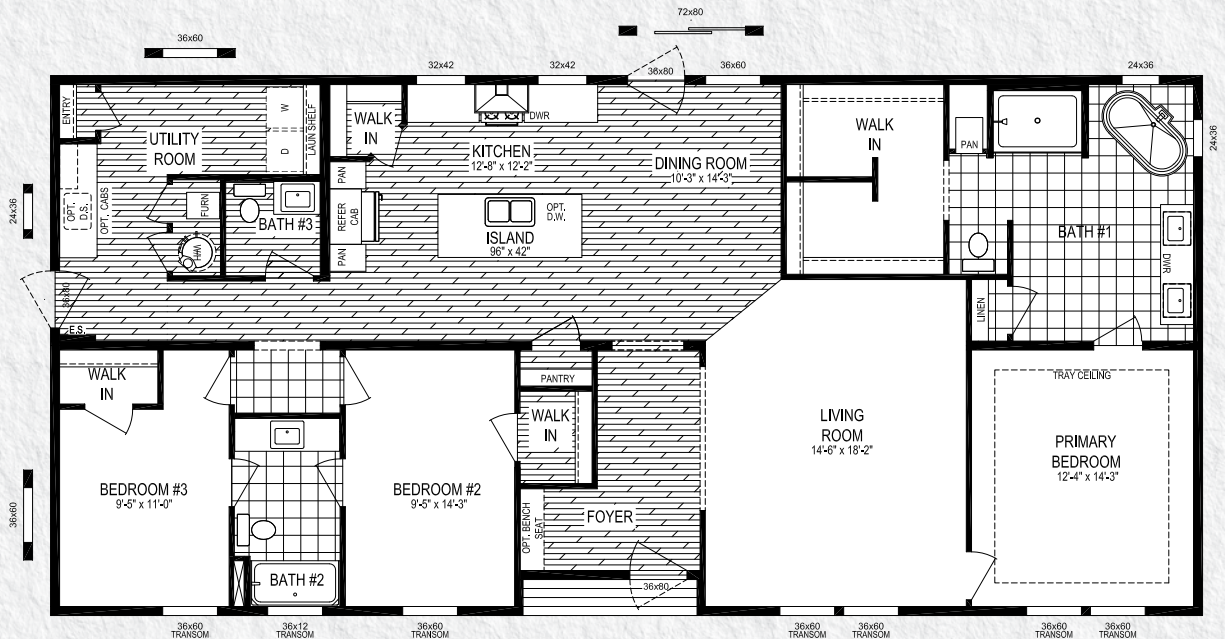


MODEL NUMBER:

# 6430-MS060

64 x 30 | 1920 Sq. Ft. 3 Bed | 2.5 Bath

## HIGHLAND



Stairwell Option

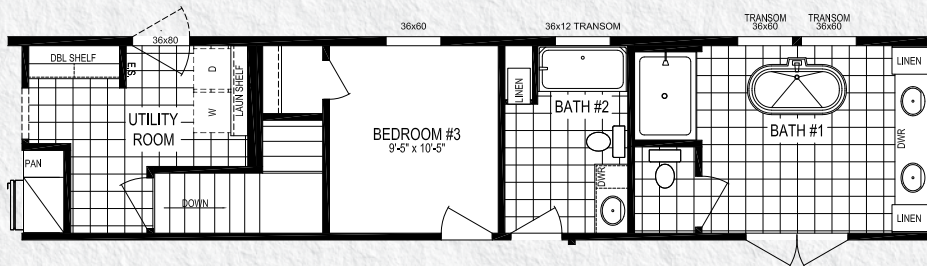
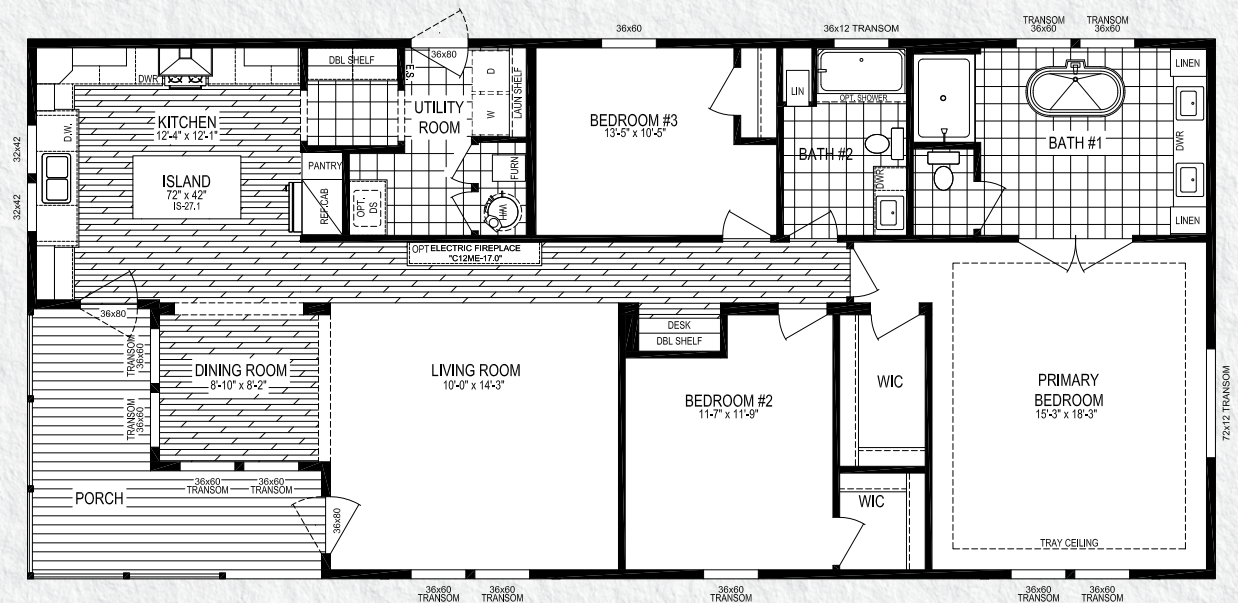


MODEL NUMBER:

# 6630-MS055

66 x 30 | 1821 Sq. Ft. 3 Bed | 2 Bath

## VIEW



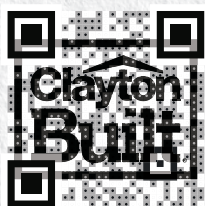
BASEMENT STAIR OPT.  
(OMITS STD. FURNACE & WH)







## BRANDS



Clayton Homes are Built Using Quality Brands

ecobee



Turn to the Experts.™

**Kwikset**

**SAMSUNG**





# EXTERIORS

Brunswick Siding



Cypress Siding



White Siding







WHERE THE LIVING IS EASY.



Your Local Home Builder



[www.boynecountryhomes.com](http://www.boynecountryhomes.com)

## MODULAR HOMES

2025



437 N. Main Street  
Middlebury, IN 46540  
574.825.7500  
574.825.7569 fax

[www.claytonmiddlebury.com](http://www.claytonmiddlebury.com)

Because our company has a continuous product update process, specifications, floor plan lay-out and dimensions shown on this literature are subject to change without notice or obligations. Construction and design specifications as well as features presented conceptual, therefore should not be used as actual construction data and may not be offered in all series or models. Our Retailer will provide accurate, up-to-date information on available options and specifications for your home. 12/24